

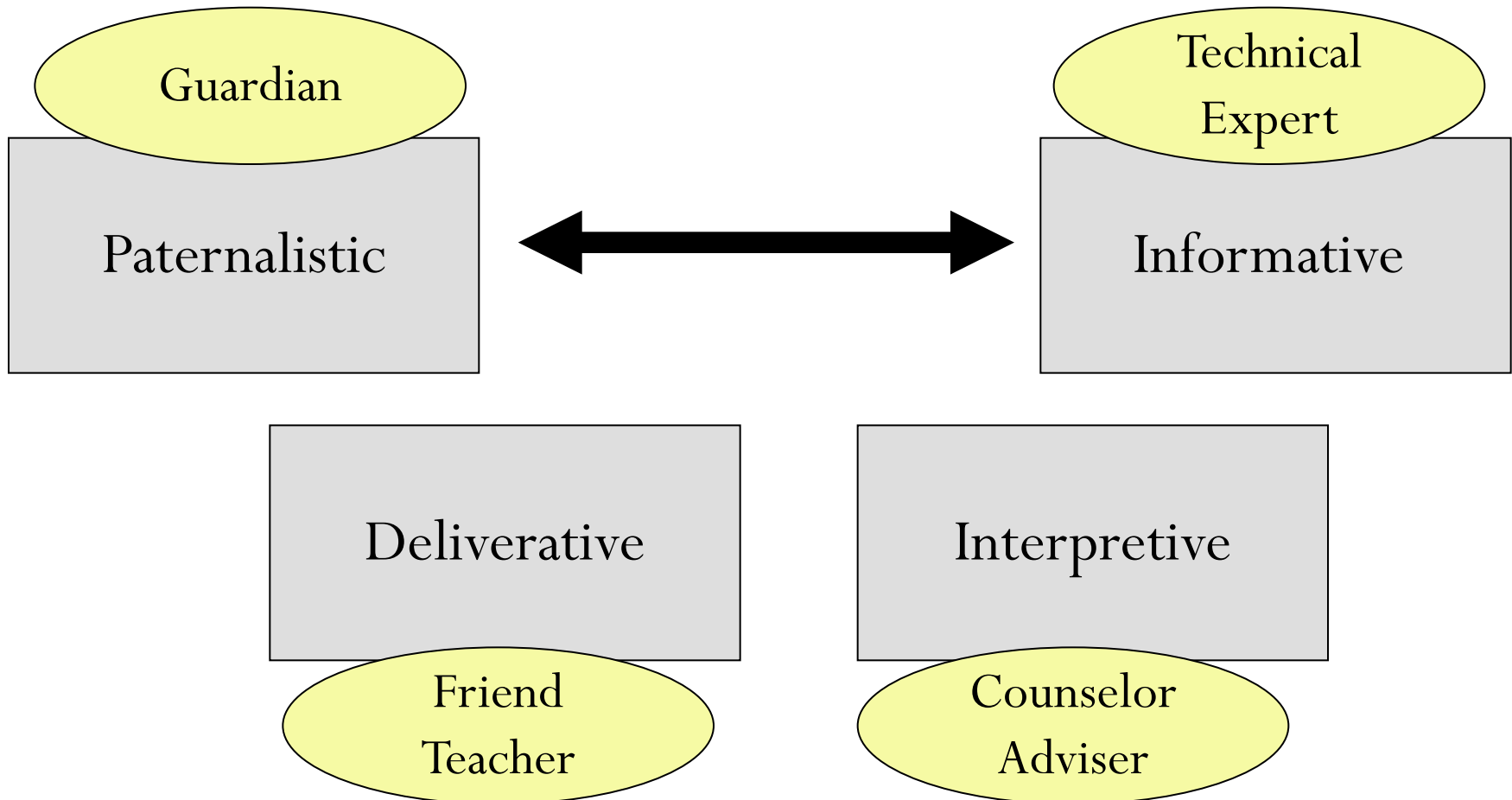
New Physician Model in a New Social Framework

BITO, Seiji, MD

First Question

- Should we not interfere with our patients?

Emanuel Model



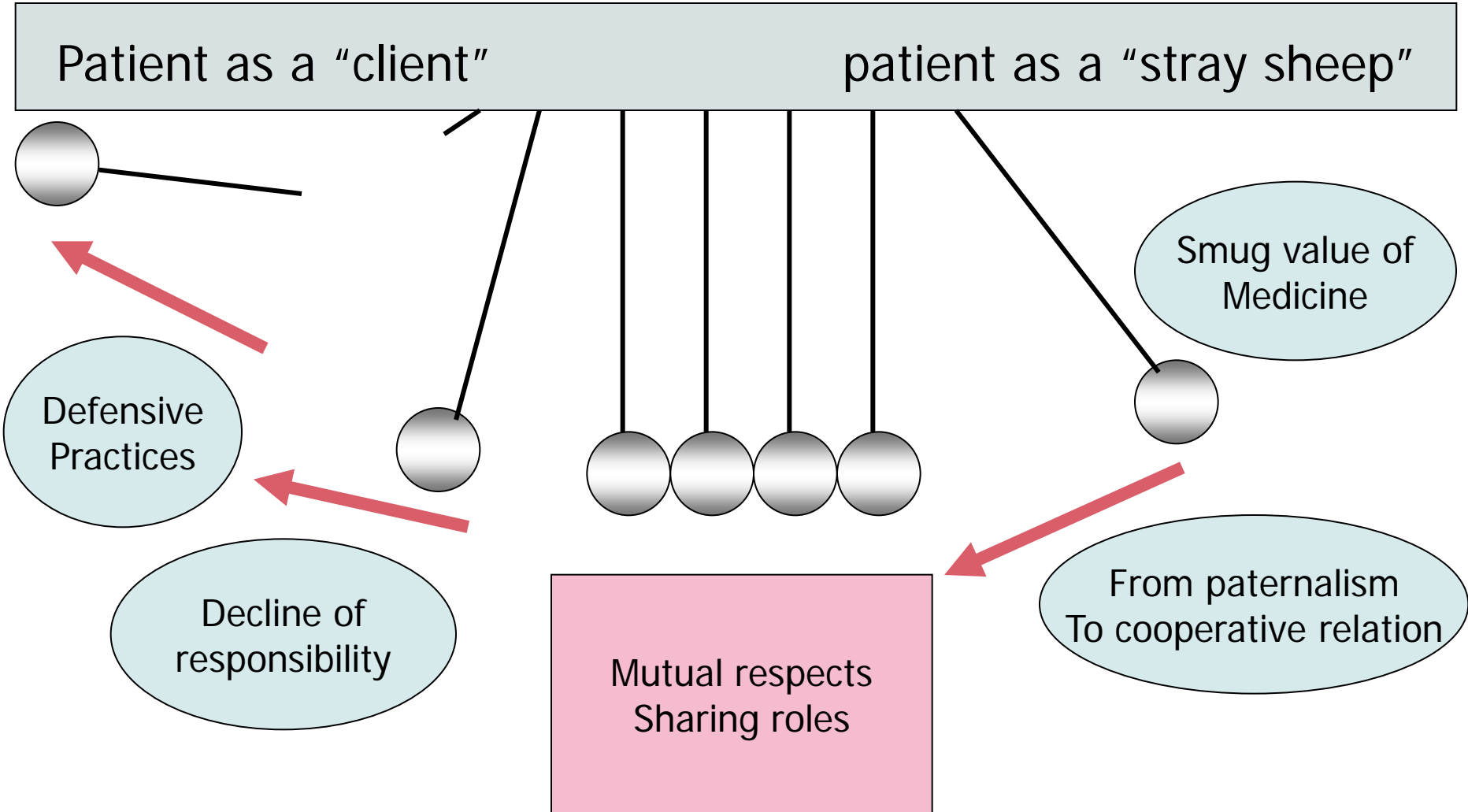
Damn!

Paternalism!?

Era of

Autonomy?

Patient-physician relationship dynamics in Japan



Why were we
so
paternalistic?

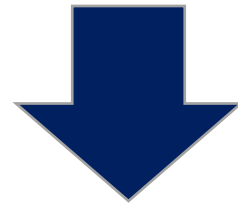
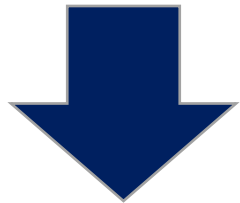
**Smug value
In Medicine**

**Naturalistic
Fallacy**



Naturalistic
fallacy

Conflict of
Interest



Physicians

“Do the right things”
For their patients

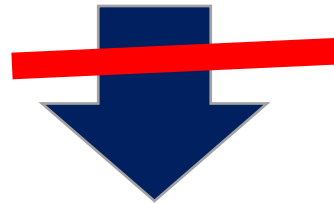
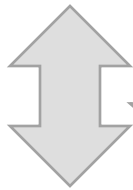
Patients

Is Benevolence paternalism?



Naturalistic
fallacy

Conflict of
Interest



Physicians

~~“Do the right things”~~

For their patients

Patients

Second Question

- What is the new value in the new social framework?

Collapses of What?



ROCK-
SOLID

ABSOLUTE
JUSTICE




What is the new
common value in
the new social
framework?



Environment
- Safety

High Moon

Environment and safety must be preserved by everybody



imagine
john
lennon

Third Question

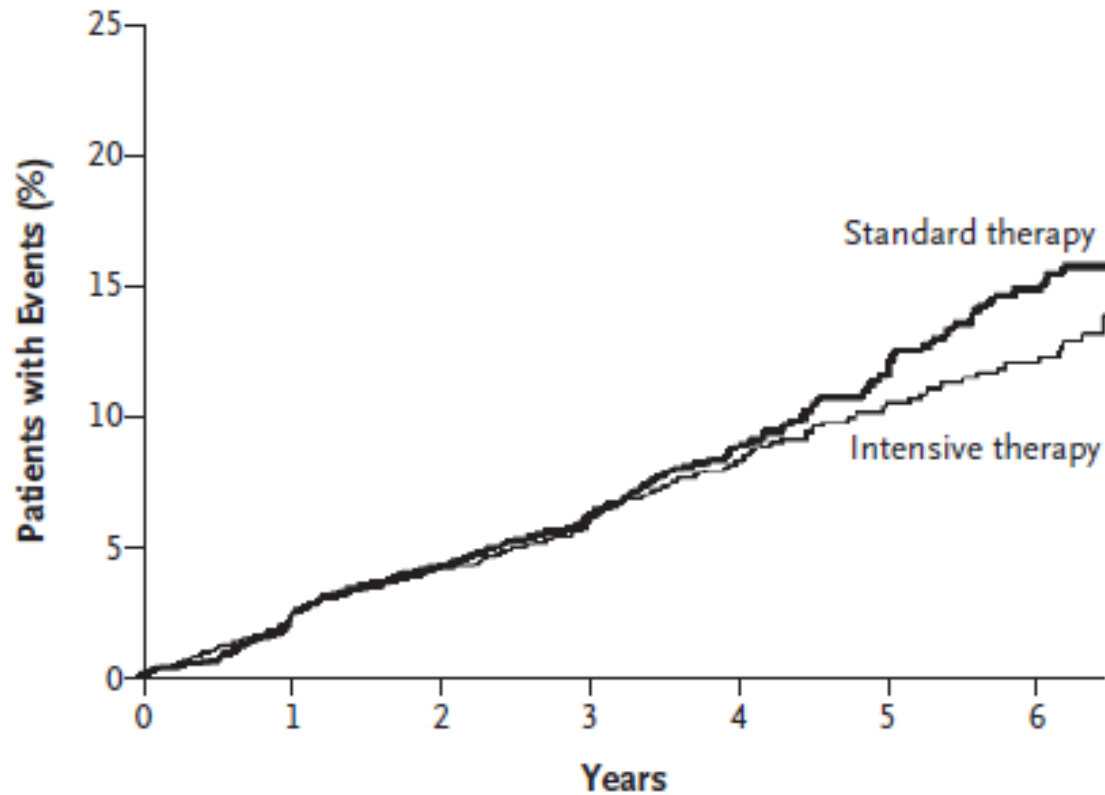
- What should physicians be in the new social framework?

How can we meet the patients' best (health) interests?

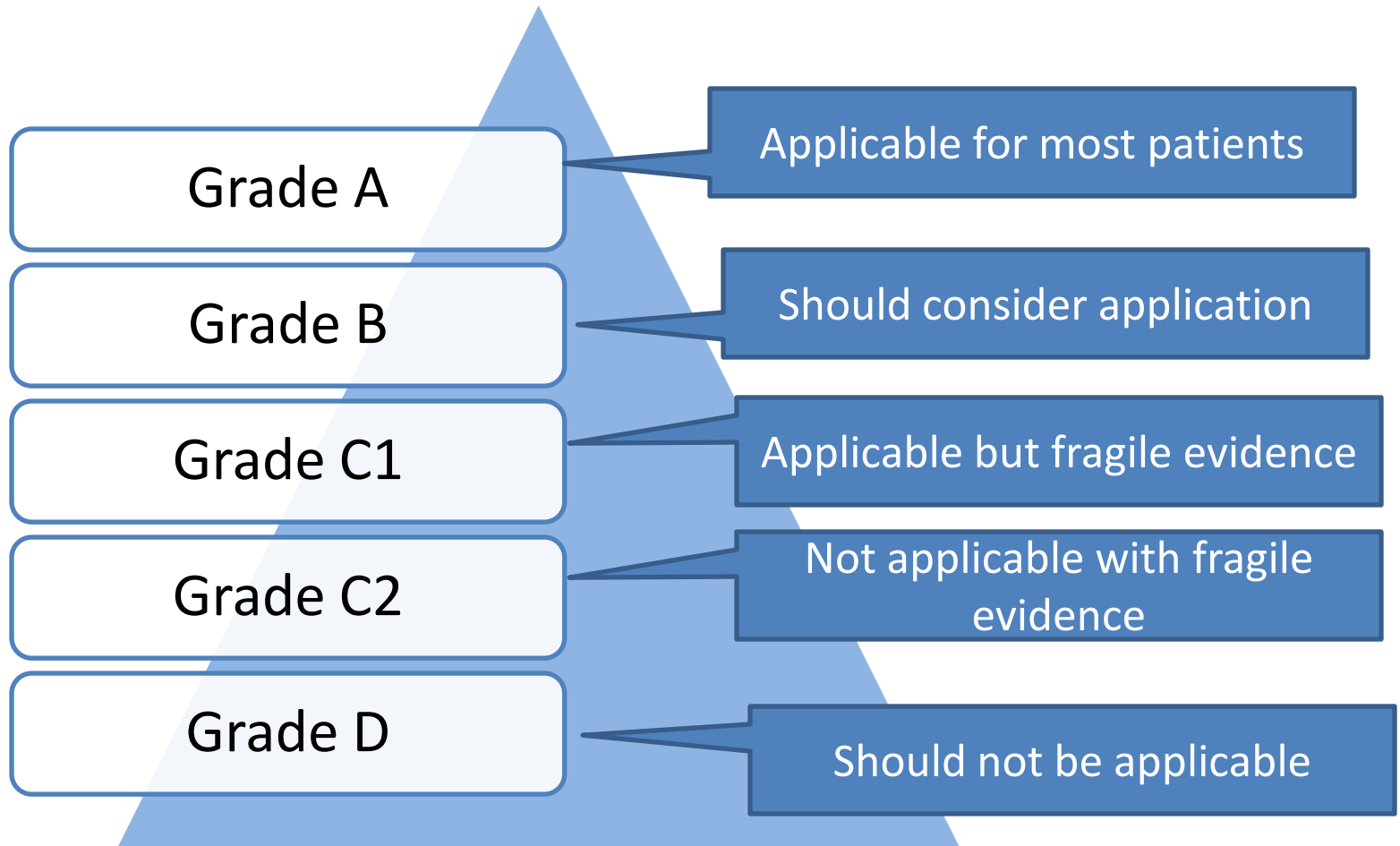


Clinical evidence shows both effectiveness and limitations of medical care

A Primary Outcome

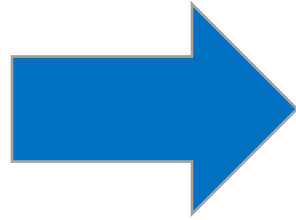


Guideline Statements will accept patients preferences.





“What we
able to do?”



“What can we
do (for you)?”



Fake

偽

For someone

人の為

Growing with a wobble



Concrete Statements

- Changing the structure of informed consent process
- Changing status of attending physician in the hospital
- Growing peer review culture in the hospital

Thank you for your attention!



Tokyo Medical Center aims health services “thinking with patients.”

まとめ

- 医師が持つパターンリズムへの批判は、医師の意識を変えつつあるが、変化させる部分が違うのではないかと尾藤は考える。
- 患者に対するプロフェッショナルとしての推奨をおこなうこと、責任感を持つことを保持したまま、自然科学的誤謬や利益相反に対して自己批判的になることが、患者とともに考えるプロフェッショナルには必要なことである。
- 専門家は要塞化し、ゆるぎない存在となる。鎧を脱ぎ、患者と共にゆらぐプロフェッショナル像が新しい社会に望まれるプロフェッショナル像だと考える。
- 思い切った変化のための構造的な改革がいくつか必要である。